



# Stacking Chair

Pro Comfort



***Pro Comfort A***  
WITHOUT CONNECTION



***Pro Comfort B***  
WITH CONNECTION



***Pro Comfort C***  
WITH ARMREST



**Pro Comfort** stackable chair for indoor use.

**Frame:** Round tube Ø 18x1.4 mm. Also available in Ø 20x1.5 mm.  
Possible frame colours chrome or black.

**Shell:** Available in many different colours; also transparent. Also flame retardant available.

**Upholstery:** Optional & in many different colours.

### Dimensions (cm)

	Height	Width	Depth
<b>Pro Comfort</b> Shell	41.5	43	51
<b>Pro Comfort A</b> Chair	81	49.5	53



**Pro Comfort** stackable chair for indoor use.

**Frame:** Round tube  $\varnothing$  18x1.4 mm. Also available in  $\varnothing$  20x1.5 mm.  
Possible frame colours chrome or black.

**Shell:** Available in many different colours; also transparent. Also flame retardant available.

**Upholstery:** Optional & in many different colours.

### Dimensions (cm)

	Height	Width	Depth
<b>Pro Comfort</b> Shell	41.5	43	51
<b>Pro Comfort B</b> Chair	81	54	53





**Pro Comfort** stackable chair for indoor use.

**Frame:** Round tube  $\varnothing$  18x1.4 mm.  
Possible frame colours chrome or black.

**Shell:** Available in many different colours; also transparent. Also flame retardant available.

**Upholstery:** Optional & in many different colours.

### Dimensions (cm)

	Height	Width	Depth
<b>Pro Comfort</b> Shell	41.5	43	51
<b>Pro Comfort C</b> Chair	81	48.5	53



**Pro Comfort C** WITH ARMREST



# COLORS

## SHELL



**S BNT**  
TRANSPARENT  
WHITE



**S GLT**  
TRANSPARENT  
YELLOW



**S VRT**  
TRANSPARENT  
GREEN



**S RST**  
TRANSPARENT  
RED



**S BLT**  
TRANSPARENT  
BLUE



**S AZT**  
TRANSPARENT  
AZURE



**S ART**  
TRANSPARENT  
ORANGE



**S BN**  
NO FIREPROOF  
**S BNI**  
FIREPROOF  
WHITE



**S GP**  
NO FIREPROOF  
**S GPI**  
FIREPROOF  
PEARL  
GREY



**S GA**  
NO FIREPROOF  
**S GAI**  
FIREPROOF  
GREY  
ANTHRACITE



**S N**  
NO FIREPROOF  
**S NI**  
FIREPROOF  
BLACK



**S TM**  
NO FIREPROOF  
**S TMI**  
FIREPROOF  
DARK  
BROWN



**S BE**  
NO FIREPROOF  
**S BEI**  
FIREPROOF  
BEIGE



**S RM**  
NO FIREPROOF  
**S RMI**  
FIREPROOF  
RED  
BRICK



**S RV**  
NO FIREPROOF  
**S RVI**  
FIREPROOF  
BRIGHT  
RED



**S AR**  
NO FIREPROOF  
ORANGE



**S GL**  
NO FIREPROOF  
**S GLI**  
FIREPROOF  
YELLOW



**S AZ**  
NO FIREPROOF  
AZURE



**S BS**  
NO FIREPROOF  
**S BSI**  
FIREPROOF  
DARK  
BLUE



**S BA**  
NO FIREPROOF  
**S BAI**  
FIREPROOF  
BLUE  
AVIATION



**S VS**  
NO FIREPROOF  
**S VSI**  
FIREPROOF  
DARK  
GREEN



**S VC**  
NO FIREPROOF  
LIGHT  
GREEN



## CHROMED FRAMES

**S TA1**  
FRAME WITHOUT  
UNION LINK

**S TB1**  
FRAME WITH  
UNION LINK

**S TC1**  
FRAME WITH  
DOUBLE ARMREST

**S TD1**  
FRAME WITH AN ARM  
WITH WRITING TABLET



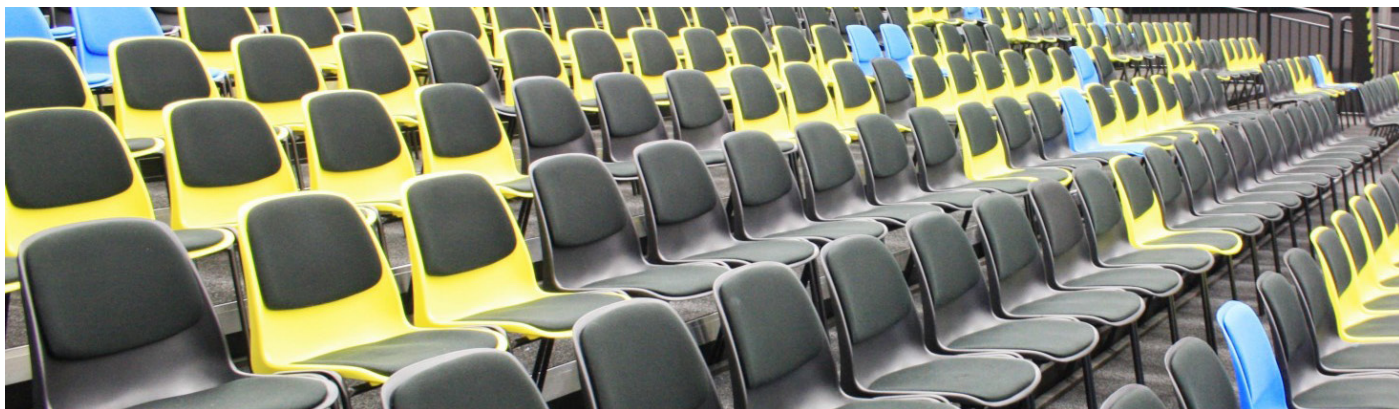
## BLACK FRAMES

**S TA2**  
FRAME WITHOUT  
UNION LINK

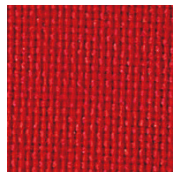
**S TB2**  
FRAME WITH  
UNION LINK

**S TC2**  
FRAME WITH  
DOUBLE ARMREST

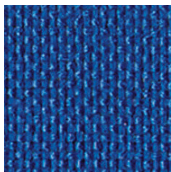
**S TD2**  
FRAME WITH AN ARM  
WITH WRITING TABLET



# UPHOLSTERY



**MA 502**



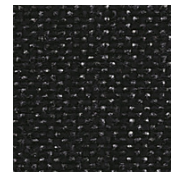
**MA 504**



**MA 511**



**MA 514**



**MA 517**

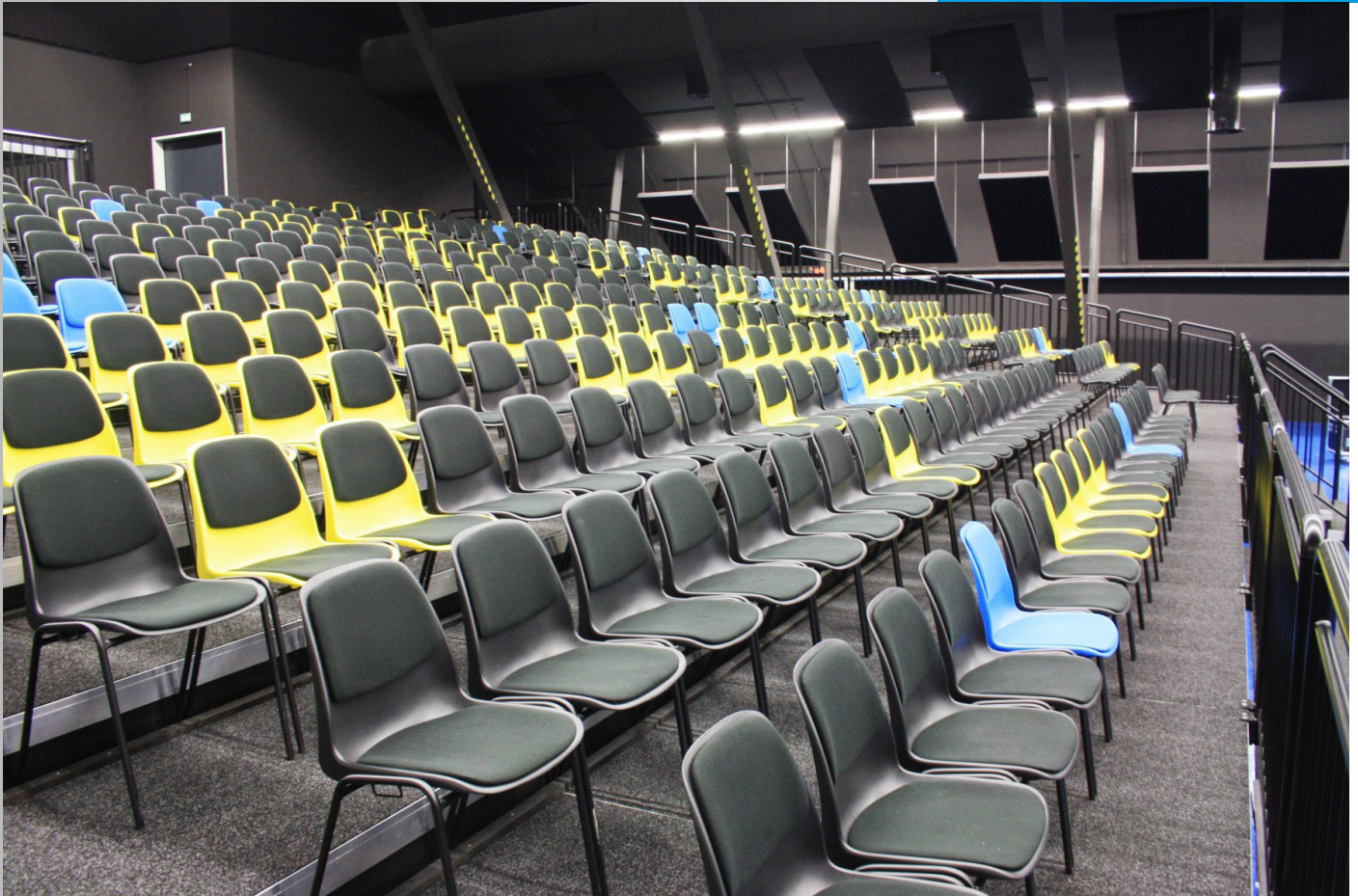
Other upholstery materials and colours on request.

# TROLLEY





# REFERENCES



# REFERENCES





# REFERENCES





# REFERENCES



# REFERENCES





# REFERENCES

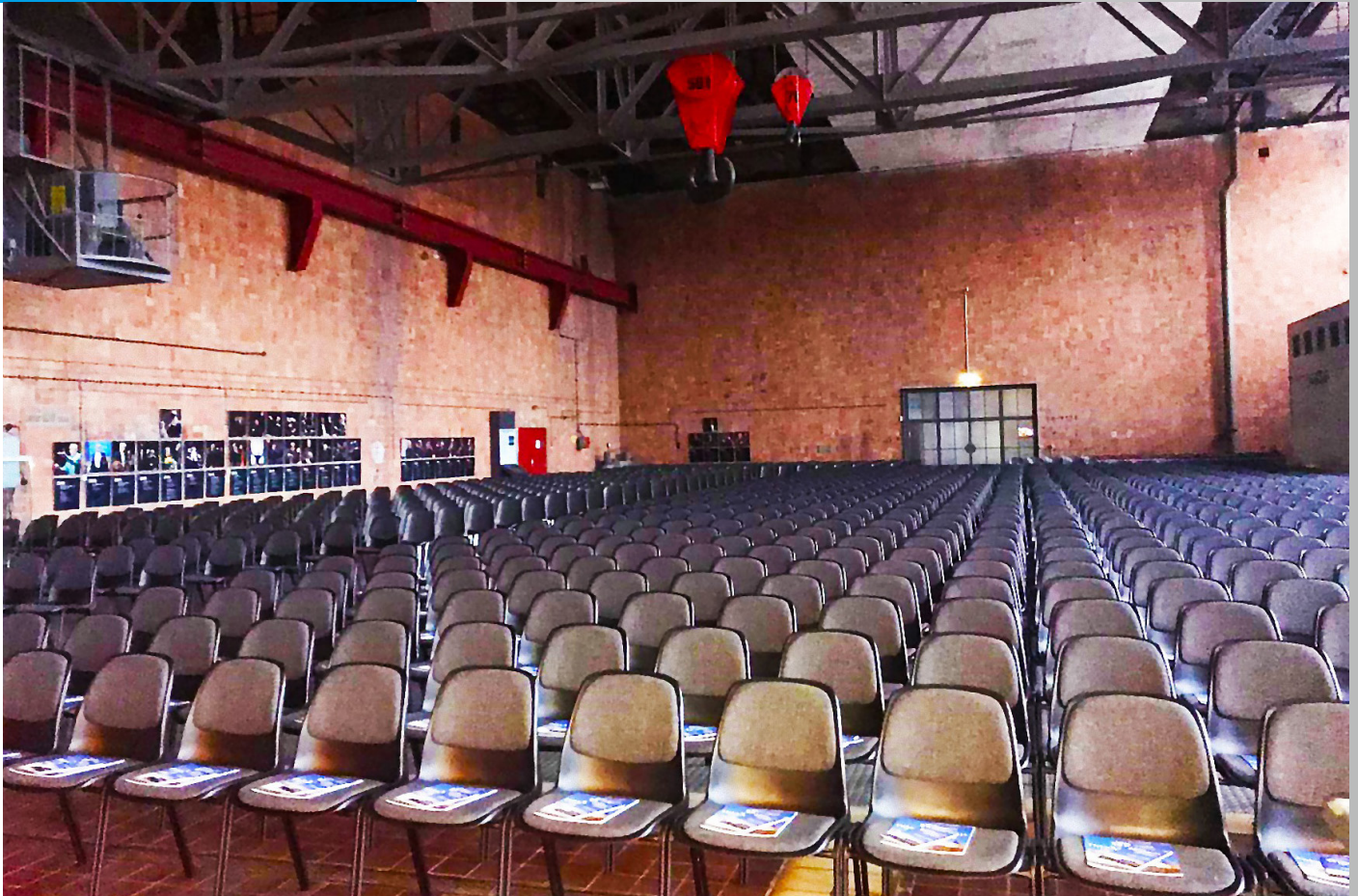


# REFERENCES





# REFERENCES



# REFERENCES







 **Qualität.**  
Made in Germany.



**BÜTEC**  
Gesellschaft für  
bühnentechnische Einrichtungen

Industriestraße 41  
40822 Mettmann

Fon: 02104/9501-0  
Fax: 02104/9501-30

E-Mail: [kontakt@buetec.com](mailto:kontakt@buetec.com)  
Web: [www.buetec.com](http://www.buetec.com)